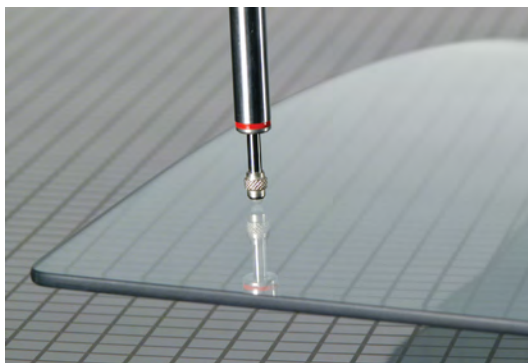


MARPOSS

Quick Glass SPC

THE SOFTWARE THAT "BEST FITS"

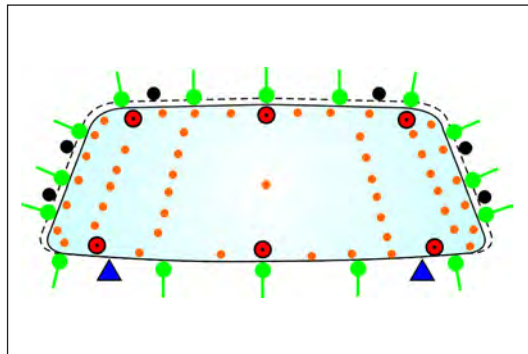
SOFTWARE MODULE FOR PROCESS QUALITY CONTROL IN AUTOMOTIVE GLASS INDUSTRY



QUICK SPC™ Glass is an **Add-On** of QUICK SPC™ for WINDOWS®, specifically developed for the automotive glass industry necessities.

Intuitive programming interface

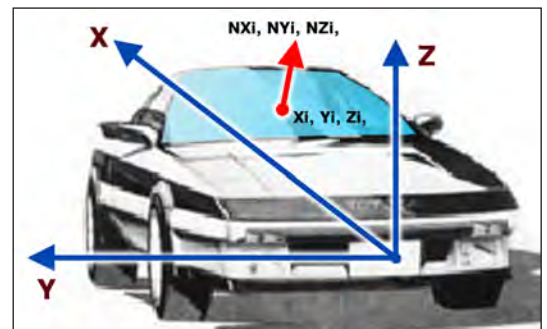
QUICK SPC™ Glass Add On provides an easy and intuitive interface for programming the measurements to be performed on the glass.



One of its main features is the possibility to import an ASCII text file of defined structure, including:

- data from a CAD 3D drawing defining the glass geometry
- data relevant to a master-glass, obtained from a CMM machine defining the master offset.

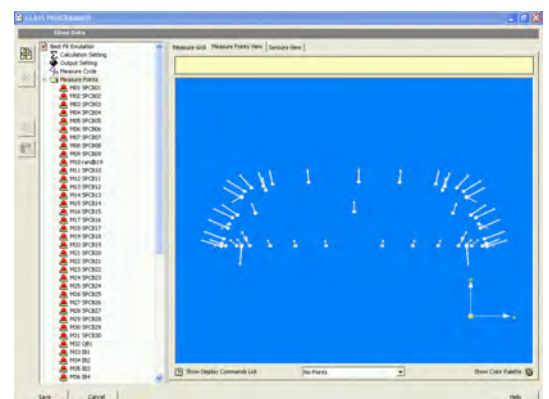
All data are in vehicle co-ordinate system.



This allows programming of a complete glass check with simply two clicks of a mouse, because the software takes care of filling up all database tables with the proper information, without any operator intervention.

Data consistency check

Through a graphic interface, the programmer can check the correct set-up of the measuring application with the programmed data.



Best fit

QUICK SPC™ Glass includes a "best fit" algorithm that can be applied to all measured data, or to a subset of them.

Independently from the positioning of the glass on the fixture, the algorithm provides real-time reliable information about:

- good / reject glass condition
- glass shape errors to control the forming process
- glass symmetry errors with respect to its edge, caused by a misalignment of the mould during the forming process (in particular for symmetric press-bent glasses, e.g. back-lites).

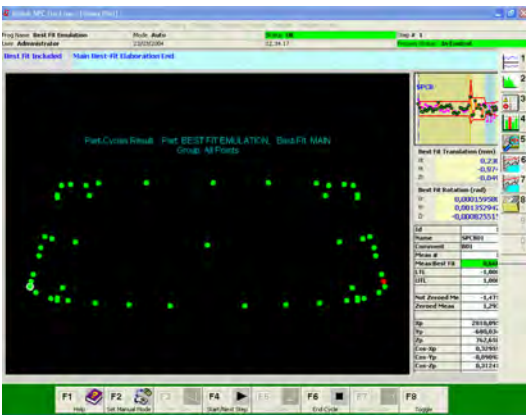
User friendly interface

Results can be easily understood thanks to a configurable display layout showing all best fitted values.

Color coded measurement groups help linking the results to the real position on the glass.



Several set-ups are available to ease operator activities.



A simple one-button zero-setting procedure is performed by mounting the master-glass on the fixture.

Product features and benefits

- More accurate and fast definition of glass data, leading to the elimination of "false" scrap parts thanks to the best fit algorithm
- immediate and straightforward feedback on the manufacturing process, simplifying its set-up
- virtually independent from the glass position on the fixture thus reducing measuring cycle time
- cheaper mechanical solutions preventing the use of dedicated glass positioning devices
- reduced periodic certification activities on the fixtures
- integrated utility to store glass data in an ASCII text file.

Additional QUICK SPC™ Glass features

This Add-On takes advantage of being part of a family of products featuring:

- native 32bit WINDOWS® software
- wizard-driven interface for application programming
- password protected functions linked to customizable user profiles
- mouse-free interface for operators unfamiliar with WINDOWS®, plus fully compliant MICROSOFT® WINDOWS® display functionalities
- integration in manual and automatic applications providing PLC\CNC, Fieldbus (Profibus, Interbus-S) interfaces
- connection to analog sensors, strain gages, linear and rotary encoders, digital probes, serial devices
- Measuring System Analysis (Gage Capability)
- machine and process statistical evaluation through its integrated Q-DAS® 32bit statistical server
- connection to virtually any industry standard network
- data transfer in customer defined format (CSV, TXT, Q-DAS® (dfd/dfx, dfq), Renault (Fichier Neutre), PSA (SESAME) among others
- customizable reporting and printing
- context sensitive on-line help
- multiple language software with on-line switch capabilities: Chinese, English, French, German, Italian, Japanese, Portuguese, Spanish, Swedish. Other language versions upon request.



MARPOSS
www.marposs.com

For a full list of address locations, please consult the Marposs official website

D6G00100G0 - Edition 03/2004 - Specifications are subject to modifications
© Copyright 2004 MARPOSS S.p.A. (Italy) - All rights reserved.

MARPOSS, ® and Marposs product names/signs mentioned or shown herein are registered trademarks or trademarks of Marposs in the United States and other countries. The rights, if any, of third parties on trademarks or registered trademarks mentioned in the present publication are acknowledged to the respective owners.

Marposs has an integrated system to manage the Company quality, the environment and safety, attested by ISO 9001, ISO 14001 and OHSAS 18001 certifications. Marposs has further been qualified EAQF 94 and has obtained the Q1-Award.

